

OKLAHOMA D.O.

FALL 2021 | VOL. 85, NO. 2

THE JOURNAL OF THE OKLAHOMA OSTEOPATHIC ASSOCIATION





YOU DESERVE THE BEST. INTRODUCING PLICO + MEDPRO GROUP

We're bringing the best of PLICO and MedPro to provide you unparalleled defense, expertise and service, including:

- Advanced products and services, from healthcare liability to cyber extortion coverages
- National claims and risk management resources paired with trusted, local expertise
- A++ financial strength ratings from A.M. Best

Protect your business, assets and reputation with Oklahoma's most dynamic healthcare liability solution. Call or visit us online to learn more.

405.815.4800 | PLICO.COM



ENDORSED BY

OKLAHOMA HOSPITAL ASSOCIATION | OKLAHOMA STATE MEDICAL ASSOCIATION | OKLAHOMA OSTEOPATHIC ASSOCIATION

A.M. Best rating as of 7/21/16. MedPro Group is the marketing name used to refer to the insurance operations of The Medical Protective Company, Princeton Insurance Company, PLICO, Inc. and MedPro RRG Risk Retention Group. All insurance products are administered by MedPro Group and underwritten by these and other Berkshire Hathaway affiliates, including National Fire & Marine Insurance Company. Product availability is based upon business and regulatory approval and differs among companies. Visit www.medpro.com/affiliates for more information. ©2016 MedPro Group Inc. All Rights Reserved.

OKLAHOMA OSTEOPATHIC ASSOCIATION

OFFICERS

Jason L. Hill, DO, HPF, President (*Eastern District*)
Jonathan K. Bushman, DO, President-Elect (*Northwest District*)
Rebecca D. Lewis, DO, FACOFP, Vice-President (*Northwest District*)
Richard W. Schafer, DO, FACOFP, Past-President (*Tulsa District*)
Allison C. LeBoeuf, JD, Secretary/Treasurer

TRUSTEES

Jonathan B. Stone, DO, MPH, FAAPMR (*South Central District*)
Justin S. Sparkes, DO, FACOI (*South Central District*)
Douglas C. Nolan, DO, FACOFP (*Eastern District*)
Christopher C. Thurman, DO (*Tulsa District*)
Teresa Hardesty, DO (*Tulsa District*)
Amanda G. Foster, DO, FACOP (*Tulsa District*)
Thomas H. Conklin, Jr., DO, FACOFP (*Eastern District*)
Mark Keuchel, DO, FACOEP (*South Central District*)
Athena Chatzigiannidis, DO, Resident Trustee

STAFF

Allison C. LeBoeuf, JD, *CEO/Executive Director*
Audrey K. Hendricks, *Deputy Executive Director,*
Director of CME Programs & Facilities, Foundation Administrator
Maegan Dunn, *Director of Outreach & Administrator of Legislative Affairs*
Jeff Bardach, *Director of Membership, Marketing & Communications*
Jacob Young, *Executive Assistant*

The ***Oklahoma D.O.*** is published quarterly from the Oklahoma Osteopathic Association Central Office:
4848 N. Lincoln Blvd, Oklahoma City, OK 73105-3335.

Advertising and copy deadline is the first Monday of the month preceding publication.

For more information:
405-528-4848
Fax: 405-528-6102
Email: ooa@okosteo.org
okosteo.org

OKLAHOMA DO

Inside this issue...



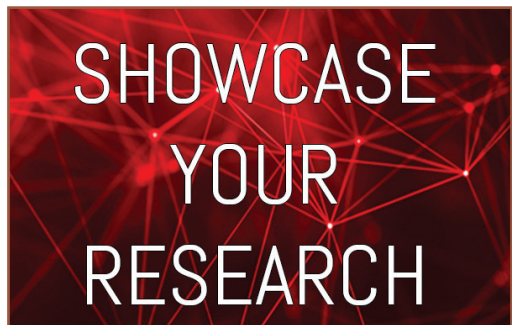
8 LEGISLATIVE UPDATE

The OOA is hard at work planning for the upcoming Legislative Session with plenty of ways for you to help advocate for osteopathic medicine.



12 DIVERSITY AWARD

OSU-CHS was recently recognized by the AOA with its Diversity, Inclusion, Equity & Unification Award.



16 13TH ANNUAL RESEARCH POSTER SYMPOSIUM

Students and Residents have the opportunity to showcase their research at the OOA's 2022 Winter CME Seminar and win a cash prize!

FALL 2021

Allison LeBoeuf, *Editor-in-Chief*
Audrey K. Hendricks, *Editor*
Maegan Dunn, *Editor*
Jeff Bardach, *Editor*

Cover Photography by Jeff Bardach

Table of Contents

7	Thank You for Your Support	21	Save the Date for 2022 CME Seminars
8	2021 Legislative Update	23	OEFOM Contributions
10	OSU-CHS Awarded Grants	24	In Memoriam
11	Introducing the Friends of the OOA	26	Join a Bureau
12	OSU Wins Diversity Award	28	Fall Birthdays
14	Student Appointed to SMA Board	30	Member News
15	OOPAC Donation Form	31	Calendar of Events
16	13th Annual Poster Symposium Information		

AOA CATEGORY 1-A CREDITS WHENEVER • WHEREVER

The DO CME Education Center, a collaboration with other state associations, is a hub for on-demand programs, webinars, and live educational opportunities addressing a broad spectrum of topics covering practice management, healthcare regulation and relevant clinical issues.

Visit **www.docme.org**, create an account & access over 150+ CMEs instantly! With more constantly being added, DO CME is the place to get the latest on-demand lectures.



To watch OOA sponsored lectures on DO CME, type this link into your browser:
www.docme.org/category/ooa

**Quitting Tobacco Has
Rough Patches.
We Have FREE Ones.**

Get **FREE** Services through the Oklahoma Tobacco Helpline.

- Patches, gum or lozenges
- Quit Coaching
- Text, email and web support

If you're thinking about quitting, call 1-800-QUIT NOW or visit **OKhelpline.com**.

NO JUDGMENTS. JUST HELP.

Oklahoma Tobacco Helpline
1 800 QUIT NOW
1-800-784-8669
OKhelpline.com

A Program of
TSET

**Free Support to
Quit Tobacco**
No Judgments.
Just Help.

Tips for Quitting

Six tips to help you quit using tobacco products.

- 1. Contact the Oklahoma Tobacco Helpline** by phone or online at 1-800-QUIT NOW or OKhelpline.com to register for TSET services. Get free quit coaching and helpful information.
- 2. Get Support and Encouragement.** Tell your family, friends and co-workers that you are quitting. You may also be eligible for at least a two-week supply of free nicotine patches, gum or lozenges.
- 3. Get Ready.** Set a quit date. Think about past attempts — what worked, what didn't.
- 4. Learn New Skills and Behaviors.** Change your routine, reduce stress, quit smoking or drinking alcohol. Avoid a lot of water and other fluids. Keep your car and home smoke-free.
- 5. Get Medication and Use it Correctly.** Talk with your health care provider about medications that can help you quit.
- 6. Remember: Setbacks are NOT Failure.** Continue positive habits, avoid situations that trigger cravings, maintain healthy routines.

Oklahoma Tobacco Helpline
1 800 QUIT NOW
1-800-784-8669
OKhelpline.com
1-855-521-10-10 Spanish 1-877-777-8334 TTY

Get **FREE** Helpline Materials for Your Office

The Oklahoma Tobacco Helpline has **FREE** posters, pens, brochures and tip cards with helpful advice for quitting. These materials encourage your patients to quit while keeping the Helpline top-of-mind.

Talk to your patients about tobacco and recommend the Helpline.

To order materials, open your smartphone camera app and scan the QR code. Then tap "Open in web browser."



Oklahoma Tobacco Helpline
1 800 QUIT NOW
1-800-784-8669
OKhelpline.com

A Program of TSET



OKLAHOMA OSTEOPATHIC ASSOCIATION
ADVOCACY AND WELL BEING

THANK YOU FOR YOUR SUPPORT!
YOUR MEMBERSHIP PROVIDES A
STRONG VOICE AT THE CAPITOL



FIND OUT MORE ABOUT YOUR MEMBER BENEFITS AT
OKOSTEO.ORG



LEGISLATIVE UPDATE

MAEGAN DUNN
DIRECTOR OF OUTREACH
& ADMINISTRATOR OF LEGISLATIVE AFFAIRS

With the ongoing COVID-19 pandemic and the people of Oklahoma passing Medicaid expansion, the OOA has been working diligently on your behalf. The following are updates on two issues the OOA is monitoring.

State Question 802

On June 30, Oklahomans voted to expand Medicaid in Oklahoma after a decade of debate with State Question 802 narrowly passing the ballot by 6,518 votes. A total of 673,110 Oklahomans voted with seven counties voting “yes” (50.48%) on the SQ and 70 counties voting “no.” State Question 802 expands Medicaid in Oklahoma covering low-income people (less than 33% of poverty) without imposing new burdens or restrictions on eligibility or enrollment. According to estimates before the coronavirus pandemic, expansion will make 200,000 more people eligible for Medicaid in Oklahoma. The state is responsible for covering 10 percent of the cost of the expansion, and the federal government will cover the remaining 90 percent.

In May, Governor Stitt vetoed Senate Bill 1046, which would have increased the rates hospitals are paying to the Supplemental Hospital Offset Payment Program (SHOPP) to 4 percent, whereas now they are paying around 2.5 percent. This bill was part of the funding Governor Stitt planned to use for his Medicaid expansion plan. Governor Stitt withdrew his plan for Medicaid expansion due to concerns that the job losses experienced from COVID-19 would significantly increase the number of people eligible for Medicaid.

After SQ 802 passed, Governor Stitt instructed the Oklahoma Health Care Authority (OHCA) to seek proposals from Managed Care Organizations (MCO) to manage the entire Medicaid population. This directive is concerning as there are no guarantees on when supplemental payments will be made to hospitals and how quickly physicians will be reimbursed. With the current model operated by OHCA, physicians are reimbursed within 10 days. With a MCO, reimbursements could take up to 45 days.

Another concern with the MCO model is the overhead cost. Currently, OHCA's overhead costs are 4 percent, but an MCO can have overhead costs of up to 15 percent.

The OOA will be hosting a Town Hall to further educate our members on this issue and answer any questions you may have about these possible changes. The Town Hall will be held virtually via Zoom on Tuesday, October 20th at 7 p.m. OOA Lobbyist Jami Longacre will be giving an in-depth update on where we are with Medicaid expansion and the challenges that lie ahead. All OOA members are invited to attend and ask questions. Please check your email for the Zoom link to join.

OSDH Proposed Rule 535

The Oklahoma State Department of Health proposed a rule change to how exemptions are filed for child vaccinations and it was signed by the Governor on June 25, 2020. Religious and personal exemptions may be obtained after submitting a completed exemption form and attending a brief instructional presentation regarding the value of vaccination and the risks of not being vaccinated. This change will allow OSDH to better track vaccination exemptions in our state and ensure parents are receiving science-based information regarding the vaccines. The OOA supported this rule change and the increased knowledge

it will bring to vaccine exemptions across our state.

Governor Stitt does not believe parents should be required to watch the brief instructional presentation to obtain a vaccination exemption and has tasked OSDH with softening this language.

We are monitoring this issue and will notify our membership if any action is needed.

Join the Bureau on Legislation

Joining the OOA Bureau on Legislation is easier than ever with the implementation of Zoom, a remote video conferencing platform.

The Bureau is open to all members and is a place for you to express your opinion and to keep up-to-date on legislative issues. The Bureau meets in the evening at the OOA's offices in Oklahoma City and by Zoom throughout the year. Zoom is very easy and allows those who can't drive to Oklahoma City to participate. Zoom is easily accessible on your phone, laptop, or desktop computer.

Please call the OOA office at 405-528-4848 or email Maegan Dunn at maegan@okosteo.org to join. All we need is your email address and your commitment to join the Bureau on Legislation.

Support your OOPAC

Oklahoma Osteopathic Political Action Committee contributions provide support to Oklahoma State legislators and legislative candidates. Please, consider a gift to this important PAC. Gifts can be made online at www.okosteo.org by selecting "OOPAC" under the "Legislation" tab, or can be made by calling the OOA office at 405-528-4848.

\$5.5M in Grants Awarded to OSU-CHS Center for Indigenous Health Research and Policy



Valarie Blue Bird Jernigan, director of the Center for Indigenous Health Research and Policy, visits a farm operated by the Osage Nation. Photo Submitted

By Sara Plummer

The Center for Indigenous Health Research and Policy (CIHRP) at the Oklahoma State University Center for Health Sciences was recently awarded two grants totaling about \$5.5 million to study and improve indigenous food systems and health outcomes. In August, CIHRP was awarded a five-year \$3.5 million Tribal Community Supported Agriculture Grant from the National Institutes of Health's National Institute on Minority Health and Health Disparities. CIHRP is partnering with the Osage Nation and the National Congress of American Indians to implement and study new community supported agriculture (CSA) programs in the Osage Nation, document

findings and if successful, compile a web-based toolkit for other indigenous communities to use to improve Native food systems.

The program would provide Osage citizens with a weekly share of freshly grown farm produce for six months, said CIHRP Director Valarie Blue Bird Jernigan, DrPH, MPH. "CSAs have improved diet and health in non-American Indian populations and are evidence-based strategies recommended by the CDC and the Institute of Medicine to reduce health disparities," Jernigan said. "We will test the efficacy of a CSA program combined with culturally-tailored nutrition and cooking education on diet and health outcomes among Osage citizens, evaluate its cost-effectiveness and develop a multimedia toolkit for disseminating findings." Most recently, CIHRP was awarded a two-year, \$2 million grant from the Department of Health and Human Services that focuses on American Indian and Alaska Natives.

CIHRP will work with several partners including: the Osage Nation; Choctaw Nation of Oklahoma; the Southcentral Foundation in Anchorage, Alaska; the Center for Alaska Native Health Research at the University of Alaska Fairbanks; and the National Congress of American Indians to develop the Center for Indigenous Innovation and Health Equity (CIIHE). Dr. Johnny Stephens, president of OSU-CHS, said the grants' focus on nutrition and overall health of Native populations coincides with the institution's mission to meet the health care needs of rural and underserved Oklahoma.

"These programs and initiatives are another example of our commitment to work to transform the health and well-being of our Native communities and I'm proud that OSU and its Center for Indigenous Health Research and Policy is at the forefront of these efforts," Stephens said. "I'm grateful for the support of our Oklahoma congressional delegation, as well as for those in Alaska and Hawaii."

The University of Hawaii also received a two-year, \$2 million grant to develop a center that will focus on Native Hawaiian and Pacific Islanders. "The goal of the Center for Indigenous Innovation and Health Equity is to restore indigenous food systems and traditional food practices to promote healthy eating and eliminate diet-related disparities," Jernigan said. "I'm also very proud that the center will be comprised of all Native-led investigators and researchers at each site. It's such an important accomplishment."

The center will focus on three areas: education and training; research and evaluation; and dissemination. The CIIHE will build community research capacity, identify, and prioritize sustainable indigenous interventions, and then implement and evaluate those interventions, she said. "These types of grants that go to indigenous researchers and directly to indigenous communities are building the capacity of Native American nations to conduct research while at the same time working to eliminate health disparities," Jernigan said. "We cannot emphasize enough the value of community-driven, community-led research."

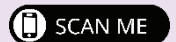


FRIENDS OF THE OKLAHOMA OSTEOPATHIC ASSOCIATION

What is FOOA?

The Friends of the Oklahoma Osteopathic Association is a membership association for the spouses, relatives, and loved ones of OOA Physician, Resident, and Medical Student members. The Mission of FOOA is to promote awareness of and support the Osteopathic Profession within Oklahoma through collaboration, education, and community.

Newly formed in 2021, FOOA strives to offer a home for the loved ones of OOA members. FOOA members coordinate community events, participate in OOA activities, and share resources and support within the organization. Use the QR code to learn more about FOOA and explore what this organization has to offer.



BECOME A MEMBER TODAY!

FOOA regular member dues are \$50 annually (November 1 – October 31). Membership for the spouses of medical students and residents is FREE. To join, simply return this form with the enclosed OOA dues renewal (you may write one check for both OOA & FOOA dues if you'd prefer).

FOOA Member Name: _____ Mobile Phone: _____ Home Phone: _____ Email: _____ <input type="checkbox"/> OOA Member Spouse, Parent or Other Loved One <input type="checkbox"/> Resident Spouse <input type="checkbox"/> Medical Student Spouse	Amount Enclosed (\$50 for each FOOA membership; Spouses of Medical Students & Residents is FREE) \$
---	--

Payment: ☐ Check Enclosed (Please make check payable to the Oklahoma Osteopathic Association.)

☐ VISA ☐ MASTERCARD ☐ DISCOVER ☐ AMERICAN EXPRESS

Credit Card No.: _____ Card Exp. Date: _____

Signature: _____ CVV: _____

Name (please print as it appears on card): _____

Billing Address: _____

City: _____ State: _____ Zip: _____

OSU-CHS Recognized by AOA with Diversity, Equity and Inclusion Unification Award



A group of first year OSU College of Osteopathic Medicine students during Orientation Week in July 2021. Photo Submitted

By Sara Plummer

OSU Center for Health Sciences and the College of Osteopathic Medicine was recognized by the American Osteopathic Association with the 2021 Diversity, Equity and Inclusion Unification Award.

This is the first year AOA has presented the DEI Unification Award.

“The award recognizes one individual and one organization that has proven exemplary leadership and commitment to promoting and advancing diversity, equity and inclusion initiatives in the osteopathic community,” said AOA President Joseph A. Giaimo, D.O.

Assistant Dean of Diversity Brenda Davidson said her reaction to learning OSU-CHS had won the award was a tremendous sense of accomplishment.

“Earning this award is transforming. OSU-CHS embraces diversity, equity and inclusion every day throughout our campus. Everyone has a fair opportunity to be who they are, to exist and to know they are valued,” Davidson said. “Though we are extremely honored to have earned this prestigious award, we are humbled and understand that there is work to be done.”

OSU-CHS established the Office of Diversity, Equity and Inclusion on Oct. 1, 2020 and the DEI Committee was formed and held its first meeting a little over a month later.


Committee members include students, staff, residents and faculty who have worked to increase the number of initiatives and programs focused on diversity, equity and inclusion and to improve campus participation in events such as Black History Month, Native American Heritage Month, and International Women’s Day.

“I’m incredibly proud of what our Office of Diversity, Equity and Inclusion has been able to do and accomplish so far and I’m looking forward to what they have planned for our institution in the future,” said OSU-CHS President Dr. Johnny Stephens. “This award

from AOA recognizes our university’s commitment to promoting and advancing DEI initiatives in the osteopathic community.”

For Davidson, working in her role as assistant dean of diversity has meant learning from people of different backgrounds and cultures allowing her to gain more knowledge by being exposed to different experiences and perspectives, and it’s exactly what she wants to happen across OSU-CHS.

“Having individuals who are not all the same, enhances innovation, creation and success for all. Understanding others’ perspectives, embracing those traits that make us different and recognizing everyone’s contributions is very important,” Davidson said. “It is not enough to include people at the table, we need to acknowledge that everyone has a voice and to embrace each other for their unique backgrounds.”



**BusinessSavvy
PHYSICIAN**

Consulting Private Practice Physicians

405-642-0111 | BusinessSavvyPhysician.com

**VIDEO LIBRARY
DISCOUNT CODE**

OOA25

FOR 25% OFF

Join us | FOR THESE UPCOMING ALUMNI EVENTS

Hosted by OSU-CHS Alumni Association



For more information and to register

All events are free and open to all OSU-CHS and OSU-COM alumni and their families.

ALUMNI TAILGATE | October 30

Join us in Stillwater as we cheer on the Cowboys.

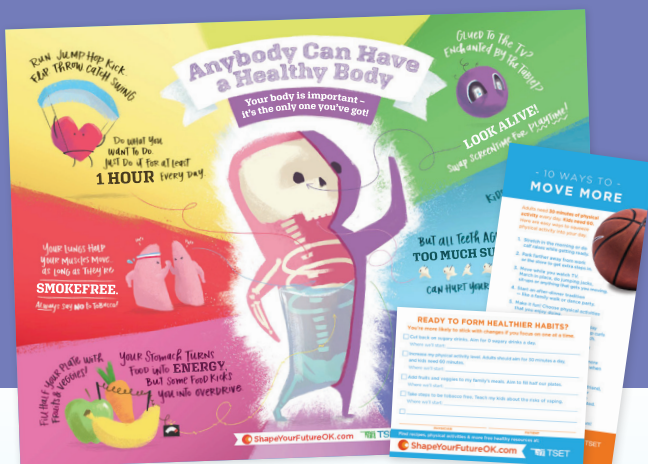
FAMILY FUN DAY | November 5

An afternoon of fun in Tulsa with food, inflatables, carnival activities, crafts and more.

medicine.okstate.edu



CENTER FOR HEALTH SCIENCES



NEED FRESH WAYS TO START IMPORTANT CONVERSATIONS?

Get Free Health Care Provider Materials

Shape Your Future has posters, tip cards and prescription pads.

Visit ShapeYourFutureOK.com/order to get yours.

 **ShapeYourFutureOK.com**



Oklahoma D.O. | Fall 2021

The Oklahoma Standard should mean smokefree air for all.

We've come a long way to achieving clean air for all, but there's still work to do...



Smoking is still allowed in Oklahoma bars and some restaurants.



Hotels in Oklahoma are NOT 100% smokefree.



Exposing children to secondhand smoke in cars is still legal.



Smoking at in-home daycares after hours is still legal.

Join the fight at

TOBACCO STOPS WITH ME.com



OSU-COM Student Appointed to SNMA Board of Directors

By Sara Plummer

At this year's virtual Student National Medical Association Conference, Tomi Adewumi — Oklahoma State University College of Osteopathic Medicine fourth year student — was appointed International Affairs Committee Co-Chair, a member of the organization's Board of Directors.

"I was truly humbled and excited to have been appointed to this position," Adewumi said. "I previously served as OSU Center for Health Sciences' SNMA Chapter President for the 2019-20 term, during which we were able to serve the community and provide support for minority premedical and medical students through several programs."

Adewumi earned a bachelor's degree in physiology from LAUTECH in his home country of Nigeria before earning masters' degrees in biomedical sciences and health care administration from OSU-CHS. He's now just started his fourth year of medical school at OSU-COM.

During his term as president, OSU's SNMA Chapter won the region's Chapter of the Year award for the first time. "It was a reflection of the collective dedication and effort of all SNMA members and the support of our faculty and staff," he said. "That position gave me an opportunity to sharpen my leadership skills to better serve the goals of SNMA."

It also opened the door to his appointment as co-chair of the International Affairs Committee, where Adewumi will work to shed light on health care disparities to SNMA members and help the organization develop successful global health interventions. "My duties also include educating the membership about international health crises, providing resources for international medical students and fostering long-lasting relationships with SNMA's international affiliations," he said. "Our hope is to intensify the international efforts of SNMA more than ever and to strengthen the international affairs of the organization and board."

Adewumi said he also hopes to increase support for international medical students and graduates as they make their way toward reaching their goals. "SNMA is the oldest and largest student-run organization in the United States," he said. "The goals of SNMA align perfectly with my personal goals as a future physician — actively supporting current and future underrepresented minority students across the nation; addressing the needs of underserved communities; and developing culturally competent physicians. I believe that to achieve these goals, everyone has a part to play and this position opens an opportunity for me to play my part in helping the organizations achieve these goals."



Tomi Adewumi, fourth year medical student at OSU College of Osteopathic Medicine, was selected as SNMA International Affairs Committee Co-Chair, a member of the organization's Board of Directors. Photo Submitted





SUPPORT OOPAC IN 2021!

DO YOUR PART
TO PROTECT AND PROMOTE
OSTEOPATHIC MEDICINE IN
OKLAHOMA.

2021 OOPAC CONTRIBUTION LEVELS

☐ PLATINUM PAC PARTNER \$2,500+

☐ EXECUTIVE PAC PARTNER \$1,000-\$2,499

☐ PREMIER PAC PARTNER \$500-\$999

☐ PAC PARTNER \$499 OR LESS

2021 OOPAC INVESTMENT

_____ MY PERSONAL CHECK MADE PAYABLE TO "OOPAC" IS ENCLOSED IN THE AMOUNT OF \$ _____

_____ I WOULD LIKE TO MAKE A ONE-TIME CONTRIBUTION. PLEASE CHARGE MY CREDIT CARD \$ _____

_____ I COMMIT TO MONTHLY CONTRIBUTIONS TO OOPAC. PLEASE CHARGE MY CREDIT CARD:

☐ \$2,508 (\$209 PER MONTH)

☐ \$1,200 (\$100 PER MONTH)

☐ \$1,008 (\$84 PER MONTH)

☐ \$504 (\$42 PER MONTH)

☐ VISA

☐ MASTERCARD

☐ AMERICAN EXPRESS

☐ DISCOVER

ACCOUNT NUMBER: _____ EXPIRATION DATE: _____

NAME AS IT APPEARS ON CARD: _____ CID: _____

ADDRESS: _____

CITY, STATE, ZIP: _____

OCCUPATION: _____ EMPLOYER: _____

SIGNATURE: _____

I DECLARE THAT THIS CONTRIBUTION IS FREELY AND VOLUNTARILY GIVEN FROM MY PERSONAL PROPERTY. I HAVE NOT DIRECTLY OR INDIRECTLY BEEN COMPENSATED OR REIMBURSED FOR THE CONTRIBUTION. THIS PERSONAL CONTRIBUTION IS NOT DEDUCTIBLE AS A DONATION OR BUSINESS EXPENSE.

PLEASE MAIL TO:
OOPAC, 4848 N. LINCOLN BLVD., OKLAHOMA CITY, OK 73105-3335

SHOWCASE YOUR RESEARCH

13th ANNUAL POSTER SYMPOSIUM

during the Oklahoma Osteopathic Association's 2022 Winter CME Seminar

Cash awards sponsored by the Oklahoma Osteopathic Association,
Osteopathic Founders Foundation and Oklahoma Educational Foundation for Osteopathic Medicine



AWARD SPONSORS

OOA | \$2,500
OEFOM | \$2,000
OFF | \$1,500

DUE DATES

11/12/2021 | Abstracts & Posters Due
01/10/2022 | Finalists' Presentations Due
01/22/2022 | Presentations

DETAILS AT OKOSTEO.ORG
UNDER THE STUDENTS/RESIDENTS MENU

Oklahoma D.O. | Fall 2021

RESEARCH

13th ANNUAL POSTER SYMPOSIUM

Osteopathic medical students and residents are invited to showcase their research during the Oklahoma Osteopathic Association's 2022 Winter CME Seminar! All entrants must be a current osteopathic medical student or an osteopathic physician currently in a postgraduate training program. Ongoing research for your residency or medical school can be submitted. Literature research submissions are also eligible for this symposium. The judging panel will select first, second and third place winners, and the top three finalists will present their research on Saturday, January 22, 2022. All students and residents in postgraduate training programs receive free registration to the 2022 Winter CME and are encouraged to attend.

MISSION

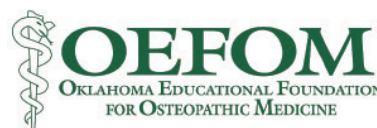
The mission of the Oklahoma Osteopathic Association's Research Poster Symposium is to showcase current osteopathic research and stimulate interest in future research projects. This will be accomplished through the exchange of ideas and information between participants of the symposium and attendees of the OOA Winter CME Seminar.

AWARDS

- First place will be awarded \$2,500, sponsored by the Oklahoma Osteopathic Association.
- Second place will be awarded \$2,000, sponsored by the Oklahoma Educational Foundation for Osteopathic Medicine.
- Third place will be awarded \$1,500, sponsored by the Osteopathic Founders Foundation.

**In order to receive award money, winners must present their research at the Winter CME Seminar.*

- All participants—whether students, interns, residents or fellows—will be eligible to win.
- All participants will receive a participation gift if they wish. The three winners will receive award money and a certificate of special recognition.
- All participants are encouraged to attend the presentation of awards Saturday, January 22, 2022 as part of the OOA's 2022 Winter CME Seminar.
- Research of the three winners will be published in a future edition of the *Oklahoma D.O.*



ABSTRACTS

Please read all guidelines before you submit your abstract. Abstracts must be sent to jeff@okosteo.org by 5 p.m. on Friday, November 12, 2021.

ABSTRACT REQUIREMENTS

- Only one abstract will be allowed per individual. Multiple submissions from the same person will be automatically rejected.
- Length is not to exceed 250 words. The 250-word limit applies only to the body of the abstract. The limit does not include the list of authors and their respective institutions, nor does it include the title.
- Format:
 - o Abstract should be double spaced and sent (in Microsoft Word.doc format) via email to maegan@okosteo.org. Your email should include the following information:
 - Name
 - Research title
 - Cell phone number
 - Email address
 - Mailing Address
 - Year of osteopathic medical school and school name
or year of postgraduate training, specialty and postgraduate institution
 - o The title needs to be centered and bold-faced.
 - o Immediately under the title, list your name and year (OMS I, OMS II, PGY I, PGY II, etc.).
 - o List authors and their respective institution(s). The student or physician who will present the poster must be listed as the first author. The principal investigator must be listed as the last author. Only the entrant is required to be an osteopathic student or physician in training.
 - o The body must include purpose of research and brief overview on method, result and conclusion.
 - o No diagrams or tables should be included in the abstract.
 - o Do not include references.
 - o Your abstract can be about previously reported or current results. If your abstract has been previously accepted and/or presented at other conferences and/or published, please provide the following relevant information (this information will not be considered as part of the 250-word limit):
 - Conference name
 - Conference location
 - Date
 - Format or journal name
 - Journal volume
 - Journal edition
 - Journal date
 - Page numbers

Abstracts that do not meet the requirements stated above will need to be reformatted before acceptance. Individuals whose abstracts are accepted will be notified via email.

CRITERIA FOR EVALUATING ABSTRACTS

The judging panel will be evaluating the abstracts submitted based on the following criteria:

- Statement of the hypothesis.
- Clear organization of the project.
- Effective use of the scientific method is evident.
- All significant variables have been identified. Efforts to eliminate bias between control and experimental groups are clear.
- The conclusion is consistent with the data and/or observations.
- Potential pitfalls of methodology or interpretation have been addressed.
- The potential significance of the experiments is placed in the proper perspective.
- Abstract is in required form and organized, well written, concise, and readable.
- The project demonstrates a novel approach and/or idea.

POSTERS

Research posters must be received in digital format by 5 p.m. on Friday, November 12, 2021. Please send digital posters to jeff@okosteo.org.

POSTER REQUIREMENTS

- Submit digital posters in the form of a PowerPoint slide (no animations), high resolution JPEG or PDF via email by the submission deadline.
- By submitting a poster to the OOA Research Poster Symposium, you certify that the poster is your original work or—if original work conducted by you and another author—any co-authors are appropriately credited for their contribution and have been informed of the submission. Infringements will result in disqualification from the symposium.
- Any research involving human research subjects must attach a copy of IRB approval with your abstract.
- Posters should be free of commercial bias, product endorsement or marketing.

CRITERIA FOR EVALUATING POSTERS

Research posters will be judged to include the following key components:

- Clear statement of a research question
- Abstract
- Evidence to support research
- Explanation of methodology
- Graphic materials to illustrate results, such as a table or graph
- Significance of findings
- Cited references

The judging panel will judge each poster individually using the following objectives:

Quality of Argument

- Is there a clear statement of research question or relationship being investigated?
- Does the poster require additional explanation? Does it stand alone?
- Is there a logical and thorough explanation of the research question?
- Are all components of the research given appropriate levels of attention?
- Is there adequate consultation of sources cited correctly?
- Are the research objectives outlined precisely?
- Was an appropriate research methodology selected and explained effectively?
- Is the significance of findings stated clearly?

Quality of Evidence

- Is the argument well supported by extensive primary research, evidence and examples?
- Are accurate evidence and examples provided?

Use of Graphic Material

- Are figures, tables, illustrations, maps and other illustrative material used effectively?
- Are the illustrations correctly cited and presented well?
- Does the visual material integrate well into the evidence of the argument?
- Is the material presented well organized?

Relevance

- Is the research presented relevant to osteopathic physicians today?

PRESENTATIONS

Finalists will be notified by December 31, 2021. In order to receive award money, winners must present their research at the 2022 Winter CME Seminar. The first, second and third place winners will present their research for 15 minutes each on Saturday, January 22, 2022 at a time to be determined. Presentations should be free of commercial bias, product endorsement or marketing. Any supporting materials for presentations, such as PowerPoints, must be submitted to jeff@okosteo.org by 5 p.m. on Friday, January 10, 2022.

IMPORTANT DATES

- | | |
|------------------------------|---|
| • Friday, November 12, 2021 | Abstracts & posters due to jeff@okosteo.org |
| • Friday, December 16, 2021 | Grant applications due |
| • Monday, January 10, 2022 | Finalists' presentations due by email to jeff@okosteo.org |
| • Saturday, January 22, 2022 | Finalists' presentations, time to be determined |
| • Saturday, January 22, 2022 | Presentation of awards, time to be determined |

QUESTIONS

Anyone with questions regarding the OOA's 2022 Research Poster Symposium may contact Jeff Bardach, Director of Membership, Marketing & Communications, at 405-528-4848 or jeff@okosteo.org.



OKLAHOMA OSTEOPATHIC ASSOCIATION
ADVOCACY AND WELL BEING

SAVE THE DATE

OKLAHOMA OSTEOPATHIC ASSOCIATION EDUCATIONAL SEMINARS

2022 WINTER CME SEMINAR

January 21-23, 2022

Hard Rock Hotel & Casino
Catoosa, OK

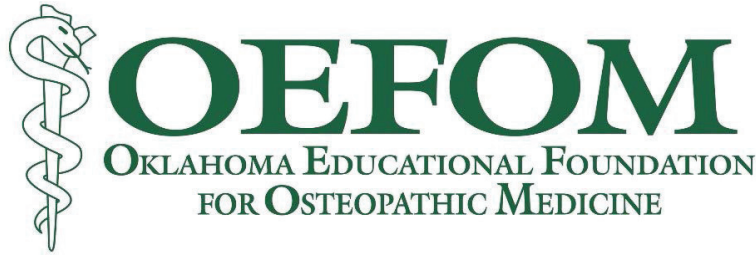
Teresa Hardesty, DO, Chair

122ND ANNUAL CONVENTION

April 28 - May 1, 2022

Sheraton Oklahoma City Downtown Hotel

Jonathan K. Bushman, DO, Convention Chair
Rebecca D. Lewis, DO, FACOFP, Program Chair



On March 1, 2021, the Oklahoma Educational Foundation for Osteopathic Medicine launched the *OEFOM Building Preservation Initiative*.

The Oklahoma Osteopathic Educational Center was built in 1985 and is home to the Oklahoma Osteopathic Association and its staff. This building is in great need of updates and repairs. Your contribution, of any amount, would be greatly appreciated and will go towards funding for necessary repairs to interior water damage, paint and flooring, and technology updates.

We need to raise \$50,000 this year to repair and preserve the Educational Center.



We are over halfway towards our goal! Can we count on you to make it?

With every \$1,000 contribution, your name will be added to the *OEFOM Building Preservation Initiative* commemorative plaque which will be displayed in the lobby of the Oklahoma Osteopathic Educational Center.

Tax-deductible gifts can be easily made to the OEFOM in the following ways:

- Make a secure donation online at www.okosteo.org » Foundation tab at top of the page » Support the OEFOM » OEFOM Building Maintenance Fund
- Fax your form to the OOA's central office at (405) 528-6102.

Credit Card Information:

Credit Card Type: American Express _____ Visa _____ MasterCard _____ Discover _____

Card #: _____ Card Exp. Date: _____

Card CID # (three digits on back of card): _____ Zip code: _____

Name on Card: _____

Signature: _____ Gift amount: \$ _____

Name on plaque (\$1,000 contributions): _____

☐ I would like to make a recurring monthly donation of \$ _____.

■ OEFOM CONTRIBUTIONS ■

Building Preservation Initiative

Robert L. Archer, DO
Jay C. Belt, DO
A. C. Brownell, DO
Jonathan Bushman, DO
Michael Carney, DO
Choctaw Nation Health Services
Authority
Thomas H. Conklin, DO
Jay D. Cunningham, DO
Harvey A. Drapkin
Robin R. Dyer, DO
Afsar Emery, DO
George E. Erbacher, DO
J Harley Galusha, DO
Stanley E. Grogg, DO in Memory
of James "Sam" Stauffer, DO

Stanley E. Grogg, DO in Memory
of J. Steve Grigsby, DO
Michael J. Irvin, DO
Gregory P. Kelley, DO
Duane G. Koehler, DO
Tammie L. Koehler, DO
Cary L. Lacefield, DO
Bret S. Langerman, DO
Sarah E. Land, DO
Robert S. Lawson, DO
Chris E. Manschreck, DO
Gary L. McLure, DO
Terry L. Nickels, DO
J. David Ogle, JD
Thomas H. Osborn, Jr., DO
Trisha L. Parks, DO

Gabriel M. Pitman, DO
Richard R. Polk, DO
Bradley J. Reddick, DO
John F. Rice, DO
Richard W. Schafer, DO
Patrick A. Sharp, DO
South Central District - OOA
John C. Stepanek, DO
Jonathan Stone, DO
Henry K. Upchurch, DO
Fred Wallace, DO
Jessica T. Weber, DO
Robert L. Winter, DO

Scholarship Fund

Kenneth E. Calabrese, DO - Memorial for G. Dale Derby, DO
Kenneth E. Calabrese, DO - Memorial for James "Sam" Stauffer, DO
Kenneth E. Calabrese, DO - Memorial for Michael C. Whitworth, DO
Kenneth E. Calabrese, DO - Memorial for Robert S. Lawson, DO
Kenneth E. Calabrese, DO - Memorial for Ronald E. Jackson, DO
Thomas J. Carlile, DO - Memorial for Joel W. Corn, DO
Thomas H. Conklin, DO - Memorial for Mr. William Rhea Stevens, Jr.
Thomas H. Conklin, DO - Memorial for Mrs. Julie A. McCurry
Thomas H. Conklin, DO - Memorial for Mrs. Linda S. Alumbaugh
David F. Hitzeman, DO - Memorial for G. Dale Derby, DO
David F. Hitzeman, DO - Memorial for Robert S. Lawson, DO
David F. Hitzeman, DO - Memorial for Michael H. Whitworth, DO
David F. Hitzeman, DO - Memorial for Ronald E. Jackson, DO
David F. Hitzeman, DO - Memorial for Gary E. Gramolini, DO
Terry L. Nickels, DO - Memorial for Michael H. Whitworth, DO
Terry L. Nickels, DO - Memorial for G. Dale Derby, DO
Terry L. Nickels, DO - Memorial for Mrs. Nancy Hughes
Gary L. Patzkowsky, DO - Memorial for J. Steve Grigsby, DO
Gary L. Patzkowsky, DO - Memorial for G. Dale Derby, DO
Richard W. Schafer, DO - Memorial for G. Dale Derby, DO

Building Maintenance Fund

Thomas H. Conklin, DO

In Memory: Deaths in the Osteopathic Family



Dr. George Dale Derby, age 72 of Owasso, OK, entered into eternal rest on August 24, 2021. He was born on September 25, 1948, in Eldon, Missouri to the late Donald and Lucille Baker Derby. In addition to his parents, he was preceded in death by his sister, Wanda Sumpter and great granddaughter, Mabel Noelle.

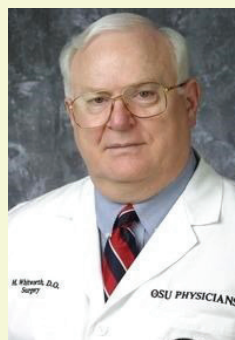
Dale was a longtime member of the Farmington Free Will Baptist Church

of Farmington, MO, and currently an active member of Rejoice Church of Owasso, OK. Dale loved the Lord and was bold in his witness of God's goodness. He and his wife served over 25 years in the bus ministry and contact evangelism in Missouri and California, telling children and adults about the good news of Jesus Christ. He taught Sunday School, was a bus captain and director in the bus ministry, taught biology and science at California Christian College, served on the school board at Farmington Christian Academy and also serving there as the sports doctor. During his time in Owasso, he served on the general board at Rejoice Church, participated in numerous medical mission trips, and in recent years, he was a leader and teacher for the Christ Directed Program Bible Study on Wednesday nights. He volunteered thousands of hours to the churches he attended with this scripture in mind: 1 Corinthians 10:31, "So whether you eat or drink, or whatever you do, do all for the glory of God." He did all of this while working as a full-time physician.

Dale graduated from Claremore High School in Claremore, OK, in 1966. He received his BS in biology at the University of Tulsa in 1971 and his medical degree from the Kansas City College of Osteopathy Medicine in 1975. He did his internship at the Normandy Osteopathic Hospital from July 1975 to July 1976. Upon completion, Dale entered the United States Navy as a Lieutenant Colonel. He was a Seabee and served in Guam as Chief Medical Officer. After 3 years of service, he was honorably discharged in 1979. Dale spent 16 years in private practice as a primary care physician in Farmington, MO. He then completed a residency in anesthesia and became the chief of the anesthesiology department at Kaiser Permanente, Fresno, CA.

In 2004, Dale and Linda moved to Owasso, and he became a founding physician at Bailey Medical Center where he continued to practice until his death. Throughout his years, Dale was nominated for numerous honors within his profession. Dale's desire during his professional life was to participate in the process of improving the integrity and quality of patient care. Because of this, he was an active member of boards and associations serving in leadership roles in many of those organizations. Out of his desire to improve and work in his community, Dale served one term as Representative for District 74 in the Oklahoma State Legislature.

Dale loved his family, and his greatest joy was being with his children and grandchildren celebrating holidays as the family gathered together. He and Linda loved fishing and taking adventurous historical trips—sometimes on their own and sometimes with their grandchildren. He loved to teach his grandchildren about God, country, and politics. He always said, "he never worked a day in his life because he loved his profession so much it wasn't like work." But he loved the Lord even more, his wife he affectionately called 'Lynny', his children, his grandkids, family and friends.



Michael H. Whitworth, D.O., passed away on Sunday, August 22, 2021, after a brief illness. Born in Soda Springs, Idaho, on September 28, 1942, Mike was the third of seven children born to Herb and Ann Whitworth. Mike was raised on a farm and ranch in the Kelly Toponce area in Idaho, where he learned the values of hard work and dedication to his faith and family. Following his graduation from North Gem High School, Mike served a mission for the Church of Jesus Christ of Latter-day Saints in Germany.

Upon his return to Idaho, he married the love of his life, Sheila Allsop. Mike and Sheila began their journey together, when they were married in the Salt Lake City Temple on September 16, 1964. Mike attended Utah State University, graduating in 1967. Following his graduation, he, Sheila and their young son, Jeff, moved to Kansas City, where he attended the Kansas City College of Osteopathic Medicine and Surgery and they welcomed their second child, Andra.

After finishing school in 1971, Mike, Sheila and their young family moved to Tulsa, where their youngest child, Brandon, was born. In Tulsa, Mike completed an internship and general surgery residency at Oklahoma Osteopathic Hospital and embarked on his career as a surgeon and educator. Mike's love and compassion for his patients was legendary, as was his concern for the young physicians who trained under him. He also received several awards over the years, including the A.T. Still Award of Excellence from the Oklahoma Osteopathic Association in 2010, the Distinguished Osteopathic Surgeon Award from the American College of Osteopathic Surgeons in 2011 and the 2017 Outstanding Physician Award from the Osteopathic Founders Foundation.

Robert S. Lawson, D.O. passed away August 25, 2021. He was born on February 11, 1939 in Joplin, MO, the only child of Frieda Louise (Gebhardt) Lawson and Sidney Lawson, D.O. He pursued his undergraduate education at St. Benedict's College in Atchison, KS and Pittsburg State College in Pittsburg, KS, from 1957 to 1960. On May 14, 1959 he married Jacquelyn Marie Landoll, the woman he loved from the moment he first saw her to the moment of his death.

He and Jackie moved to Kirksville, MO, in the fall of 1960 for him to attend the Kirksville College of Osteopathy and Surgery, where he received his Doctor of Osteopathy and Surgery degree in May of 1964. While pursuing his doctorate, he met Joseph E. Wolf, D.O. who was his fraternity brother at the IT Sigma House. Dr. Wolf became the brother he never had with an enduring friendship of 61 years.

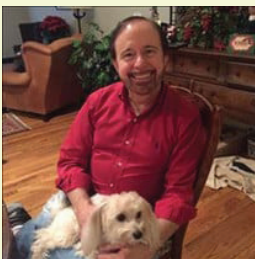
He moved to Tulsa, OK, in 1964 to complete his Internship and Residency at the Oklahoma Osteopathic Hospital (Oklahoma State University Medical Center). He joined the staff of the Benien Clinic and Department of Surgery staff at OOH in 1968 until retiring from surgery in 1995. He then practiced family medicine and was the medical director at the Indian Health Care Resource Center until his retirement in 2007.

In Memory: Deaths in the Osteopathic Family



Dr. Ronald Earl Jackson, 70, passed away peacefully on August 27, 2021, in Broken Arrow, Oklahoma surrounded by his wife and children. He was born on April 15, 1951, in Fort Worth, Texas to parents Betty Ruth Rutledge Jackson and Ernest Walter Jackson.

Ronald touched the lives of many as a skilled surgeon who practiced in the Tulsa area for nearly 40 years. In 1983 he co-founded Surgical Specialty Associates with longtime partner Dr. Michael Whitworth. Ronald was later a partner at Surgical Associates for 20 years. He earned his medical degree in 1978 from the Texas College of Osteopathic Medicine, where he was an honors graduate. He held degrees from Stephen F. Austin State University in Nacogdoches, TX and Meinders School of Business at Oklahoma City University, with additional graduate studies at the University of Houston. He was a Fellow of the American College of Osteopathic Surgeons.



Gary Eugene Gramolini was born on September 2, 1953 in Lawton, Oklahoma to Onita and Camillo (CJ) Gramolini. As a child, he was an altar boy at Saint Barbara's Catholic Church, he participated in baseball, played the organ in his band called "The Enterprise," and graduated from Lawton Eisenhower High School in 1971. After high school, Gary went on

to study at the University of Oklahoma, graduating in 1974 with a Bachelors of Science in Zoology. He was fiercely passionate about medicine, having come from a family of medical professionals including his father, mother, and grandfather, Dr. Albert Fish.

Gary decided early on to follow in his father's footsteps to become a physician. He completed his medical training at Oklahoma State University College of Osteopathic Medicine in Tulsa, Oklahoma in 1978, finding his passion in the fields of obstetrics, gynecology and family medicine. Later that year Gary opened his own private practice in Tulsa with his partner Dr. Gary Cannon, and took ownership of his father's Lawton practice in 1986. With his love of technological innovation, he pioneered the use of telemedicine long before its current implementation today.

In 1995, after 17 years of practice, Gary left obstetrics to focus his time to weight loss and family medicine, establishing Docs Weight Loss and Family Care Clinic. He was well-known for being a very patient, kind and warm physician to all whom had the blessing of being under his care. Gary loved sports (an Oklahoma Sooners fan for life), photography (he was constantly filming and photographing his family- his children referred to him as "papa"razzi), and he was an avid music enthusiast.

Gary was a dedicated, loving and affectionate father. Gary was a traditional Italian father and family meant everything to him. He instilled the importance of family into each of his children and grandchildren, often stating: "Friends come and go, but family is forever." Gary established longstanding family traditions such as yearly trips to Disney World and Branson, and he always made sure the family was together every year for the holidays.



The Osteopathic community lost a friend, colleague and physician when Dr. Steve Grigsby, 73, passed away Thursday July 15, 2021 at Hillcrest Medical Center in Tulsa, OK after an unexpected illness. John Steven Grigsby was born May 20, 1948 at Craig County Hospital in Vinita to John and Alene Grigsby of Welch. While at Welch, Steve met the love of his life, Kay to whom he was married for over 50 years.

Dr. Steve Grigsby attended medical school at the OSU College of Medicine after graduating from Michigan State University, Oklahoma State University and NEO A&M. In addition to excelling in the classroom, Steve's doctoral research was integral in developing the radio-immunoassay to measure insulin levels that is still used today. Dr. Grigsby started a family practice in his hometown of Welch and then moved to Miami where he lovingly cared for multiple generations of patients who often considered him as their friend. Dr. Grigsby served as Chief of Staff at Miami Integris Hospital as well as a member of the Rural Health Board of Integris Health Systems in Oklahoma City, but lived out his career being the consummate rural health care provider.

The true loves of his life were his family. Together, he and Kay immensely loved their boys, their boy's wives who they considered to be daughters and, in more ways than can be measured, their nine grandchildren. Together Steve and Kay attended countless soccer, t-ball, basketball and football games along with plays, concerts and youth ranch rodeo events.



Dr. Michelle Diane O'Meara, 64, died Thursday, August 12, 2021. She was born February 16, 1957 in Oklahoma City to John and Margaret O'Meara (nee Kanaly). She was preceded in death by her parents, brother Jack O'Meara, and sisters Maggie Miller and Kathleen Marks.

Michelle graduated from Bishop McGuinness Catholic High School in 1975. She went on to attend the University of Oklahoma, receiving her Bachelor of Science in 1980 and her Master of Science in Nutrition in 1988. Michelle always wanted to do more to help her patients. At the age of 42, she began her journey to become a Family Medicine Physician at the Oklahoma State University College of Osteopathic Medicine.

Michelle was full of life and loved to have fun. She was known for her outgoing spirit, dedication to her patients, and love for her friends and family. She was most proud to be "Mimi" to her two grandchildren.



GET INVOLVED WITH THE OOA BY JOINING A BUREAU!

The Oklahoma Osteopathic Association has many ways for members to get involved and help guide the future of the association. One of the best ways you can make a difference is by participating in one of our bureaus.

If you are interested in joining one or more of these bureaus, check the boxes that apply and mail this form back to us.

Name: _____ Cell Phone: _____

Email: _____

- ☐ Bureau on Legislation: This bureau keeps members updated on the latest legislative news that will impact your practice and patients. The participants also help guide the OOA's stance on legislative issues.
- ☐ Bureau on Residents and New Physicians: This bureau is open to residents and physicians who have been in practice for less than 10 years. They focus on how the OOA can better serve new physicians at the beginning of their careers.
- ☐ Bureau on Membership: This bureau is open to any active member of the OOA and focuses on expanding our membership and bringing new benefits to members.
- ☐ Bureau on Postgraduate Education: This bureau primarily focuses on organizing the annual Research Poster Symposium. The symposium provides students and residents with an opportunity to showcase their research and win prize money.
- ☐ Bureau on Continuing Medical Education: This bureau focuses on the Winter and Summer CME Seminars to help determine the program and overall purpose of each seminar.
- ☐ Ad Hoc Bureau on Marketing: This bureau will focus on how to better communicate the OOA's message to our members and the public.

Please send completed forms to:

Mail: 4848 N. Lincoln Blvd., Oklahoma City, OK 73105

Fax: 405-528-6102 Email: Maegan@okosteo.org

Connect with us!

With everything vying for your attention, we know how hard it is to keep up with the latest osteopathic news. Follow these simple steps to make sure you don't miss a thing!

1

Like & follow the OOA on Facebook, Twitter & Instagram at @OKOSTEO.

2

Sign up for OOA text alerts by texting 'OOA' to 405-544-4123. *We only send an occasional text so you won't be bombarded.*

3

Update your profile at www.okosteo.org so we have your most current contact information. *If you need assistance, call us at 405-528-4848.*

4

Check your inbox Tuesday mornings for the latest edition of the OOA Report.

Oklahoma D.O. | PAGE 27

LET'S CELEBRATE!

OOA MEMBER BIRTHDAYS

Help us wish these OOA members a Happy Birthday!

1 Jenny J. Alexopoulos, DO Randall J. Grellner, DO Gregory D. Pickett, DO	2 Zachary A. Fowler, DO	3 Shannon N. Boughner, DO	4 Ryan P. Conley, DO Douglas A. Powell, DO	5 James H. Anderson, DO C. Shane Hume, DO Paul A. Reel, DO Sheila J. Stanek, DO
6 Lisa L. Crawford, DO Jawaun M. Lewis, DO	7 Jeanie L. Klabzuba, DO	8 Trenton F. Horst, DO Thomas W. McCulloh, DO Blake Parsons, DO Jerry D. Scholz, DO Glenn L. Smith, DO	9 Timothy Fernstrom, DO Ama S. Isaac, DO Chris A. Shearer, DO	10 Dale W. Bratzler, DO Summer M. Lepley, DO Mark W. Newey, DO Binh T. Phung, DO Kelly L. Shuler, DO Layne E. Subera, DO
11 Wendell L. Richards, DO Robert M. Wakefield, DO	12 Stephanie J. Forbes, DO Frances F. Haas, DO Ryan L. Nelson, DO Carl B. Pettigrew, DO John F. Rice, DO Jess T. Roy, DO Monica M. Woodall, DO	13 Jeffrey M. Calava, DO Charles E. Henley, DO Derek M. Matheson, DO Kyle C. Wooderson, DO	14 Linzi L. Stewart, DO Bradley C. Taylor, DO Christine Calabrese Wilson, DO	15 Evan D. Cole, DO Monica E. Harden, DO Edward H. Yob, DO
16 George M. Jennings, DO J. Michael Ritze, DO Neal S. Templeton, DO Frank W. Wyant Jr., DO	17 D. Paul Campbell, DO Franklin J. Evans, DO Colm P. McCauley, DO Richard E. Mills, DO Jessica T. Erbacher Weber, DO	18 Steven E. Cox, DO Scott A. Mitchell Sr., DO Keely W. Wheeler, DO	19 Stephen G. Bovasso, DO Johnny D. Duncan, DO Henry S. Hewes, DO Beth E. Hites, DO	20 Patrick P. Lo, DO
21 John D. Conley, DO Fred J. Crapse Jr., DO	22 Sheldon C. Berger, DO Eric S. Lee, DO Dale D. Reinschmiedt, DO	23 Kenneth W. Gibson, DO	24 V. Ray Cordry Jr., DO Jonelle G. Dutton-Gaddis, DO Lee Vander Lugt, DO	25 Justin P. Joseph, DO Xuan Thao Nghe, DO Jonathan Robins, DO Gregory A. Rogers, DO
26 Angela I. Carrick, DO Tiffany R. Ferguson, DO Barclay J. Sappington, DO	27 Christopher L. Cole, DO Jack R. Lamberson, DO Kayse M. Shrum, DO Jason M. Taylor, DO	28 Debbie Gladd Foley, DO James E. Magnusson, DO Brandon M. Rhinehart, DO Steven S. Sands, DO	29 Amanda G. Foster, DO Myra A. Gregory, DO Carlos Guevara, DO Timothy F. Rathbun, DO Kathryn Trusell, DO	30 Duane G. Koehler, DO
31 Nicholas J. Bentley IV, DO William J. Herron, DO Robert D. Hill, DO Marilyn L. Hines, DO Leslie J. Rebtoy, DO				

October

- | | | | | |
|---|--|---|---|---|
| 1 Terry L. Nickels, DO
Tye W. Ward, DO | 2 Gregory P. DiSalvatore, DO
Christopher A. Edge, DO | 3 Wm. Joseph Harrison, DO
Robert D. Holsey, DO
Timothy L. Moore, DO | 4 Rodney O. McCrory, DO | 5 G. Douglas Menz, DO
Trung H. Pham, DO |
| 6 Mary Sue Kendrick, DO
Michael T. Ray, DO | 7 Travis D. Campbell, DO | 8 Steven L. Nussbaum, DO | 9 Stacy M. Chronister, DO
Mark L. Mathers, DO
Debra L. Montgomery, DO
Steven E. Watson, DO | 10 Jay D. Cunningham, DO
Harold Zane DeLaughter, DO
Rheydene S. Ferguson, DO
Jayson D. Henry, DO
Wayne A. Huey, DO
Susan V. Mathew, DO
Frank B. Parks, DO |
| 11 Gina M. Caravaglia, DO
Erica D. Dearman, DO
Anastasia C. Fisher, DO
George E. Freeman, DO
Billy G. Henderson, DO
Sherri L. Wise | 12 Kim K. Hunter, DO
Scott M. Koch, DO
Nathaniel D. Rapp, DO | 13 Peter Baik, DO
Erin E. Brown, DO
Walter F. Kempe, DO
Garrick L. Shreck, DO
Adam B. Smith, DO
David L. Smith, DO
Stanley J. Smith, DO | 14 Dee D. Baughman, DO
Jay K. Johnson, DO
Timmeni L. Stevens, DO | 15 Brian K. Berryman, DO
James E. Forrestal, DO
Raji M. Gill, DO
Raymond K Griffith, DO
J. Matthew Roberts, DO |
| 16 Michele L. Neil, DO
Karen L. Schafer, DO
David W. Seitsinger, DO | 17 Sheryl E. Ghan, DO
Dixie L. Grant-Collins, DO
Clint F. Kirk, DO
Cheryl B. Kroeker, DO
Nelson C. Onaro, DO
Thomas W. Salyer, DO | 18 Janet L. Garvin, DO
Anita Luetkemeyer
Jeff S. Reid, DO | 19 Whitney L. Cline, DO
Valerie E. Jones Robinson, DO | 20 |
| 21 Reza J. Azadi, DO
Edward A. Huber, DO
Cynthia L. Nydick, DO
Keith S. Patterson, DO | 22 Larry T. Lovelace, DO
Randall S. Reust, DO
James P. Sisk II, DO | 23 Brian T. Crotty, DO
Lauren C. Hopkins, DO
Fred Wallace, DO | 24 Kevin W. Anderson, DO
Bruce D. Cornett, DO
Thomas H. Nulf, DO | 25 Brian A. Coder, DO
Frank L. Frederick, DO
Candice M. Meyer, DO
Roger K. Pfeiffer, DO
Clayton H. Royder, DO |
| 26 David Lovelace, DO
G. Barry Robbins Jr., DO
Brenda R. Stutzman, DO | 27 Alejandra S. DeSantiago, DO
Elliott R. Schwartz, DO | 28 Tamara J. Holloway, DO
Paul A. Mobley, DO
Marinn Rank, DO
Christopher Snyder, DO | 29 Bobby N. Daniel, DO
R. Brian Hightower, DO
Scott Reeder, DO | 30 James D. Ford, DO |

November

- | | | | | |
|--|--|--|---|--|
| 1 Ryan Ford, DO
Richard R. Polk, DO
Brad W. Stahlheber, DO | 2 Steven C. Buck, DO
Tom W. Ewing, DO
Derek L. West, DO
James M. Wiley, DO
D. Matt Wilkett, DO | 3 Nolen D. Anderson, DO | 4 | 5 Luke R. Leming, DO
Charles H. Mitchell, DO
Justin B. Plaxico, DO
Brian H. Rodgers, DO
Robert L. Skelton, DO
Andrew J. Sperling, DO
William F. Sturdevant, DO |
| 6 Shannon P. Calhoun, DO
Ronald Fried, DO
John T. O'Connor Jr., DO
Sarah McCullough Washatka, DO
Gregory L. Wilson, DO | 7 A. C. Brownell, DO
Kenneth E. Calabrese, DO
Brian C. Diener, DO
Brianna R. McMurray, DO
Basima Williams, DO | 8 Joseph J. Back, DO
M. Michelle Barlow, DO
Kelley J. Joy, DO
Terry M. Lee, DO
Joe D. Sagely, DO
R. Jeff Wright, DO | 9 Ahmed S. Salous, DO | 10 John J. Chiaffitelli, DO
David N. Chorley, DO
Paul D. Morrison, DO |
| 11 Timothy W. Boersma, DO
Scott A. Ghare, DO
William B. Parsons, DO | 12 Jerry C. Crain, DO
David C. Crosswhite, DO
Tara B. Hasenpflug, DO | 13 Lee A. Kirsch, DO
Leon J. Yoder, DO | 14 Charles D. Black, DO
Matthew D. Davis, DO
Blake Middleton, DO
C. Patrick Sullivan, DO | 15 Nancy A. Brown, DO
Heather A. Jones, DO
Nghia T. Phan, DO
Paul B. Rock, DO |
| 16 Gerald R. Hale, DO
JoAnn G. Ryan, DO | 17 Melinda R. Allen, DO
James D. Campbell, DO
Julie A. Dionne, DO
Wilmer D. Fast, DO
Laura Jane Holsey, DO
Christopher M. Lee, DO | 18 R. David Hill, DO
Mary K. Mercer, DO
Thomas H. Osborn Jr., DO
Jana L. Wilkins, DO
Robert C. Williams, DO | 19 | 20 Earl U. Bachenberg, DO
Semira Charboneau, DO
Donna L. Schneider, DO
Dawn R. Wilson, DO |
| 21 Robert J. Breckenridge, DO
Steven D. Hinshaw, DO
Shawnaree L. Lee, DO
Neal W. Siex, DO | 22 Sheila A. Newcomb, DO
Kyra J. Vineyard, DO | 23 Sean D. Boone, DO
Joseph C. Nemcok, DO
W. W. Stoeve, DO | 24 Richard A. Felmlee, DO
Victor R. Palomino, DO | 25 Peter C. Chambers, DO
Valerie N. Ritter, DO
Alyson B. Willis, DO |
| 26 | 27 Daniel W. Langley, DO
Chriss B. Roberts, DO | 28 Steven D. Baker, DO
Kimberly J. Bennett, DO
Dean R. Fullingim, DO
Ben G. Nguyen, DO
Connie M. Wilson, DO | 29 Kristopher R. Avant, DO
M. Chad Owens, DO | 30 Mark E. Blubaugh, DO
E. Michael Callery, DO
Gregory M. Schmidt, DO |

December

Become a member of the Oklahoma Osteopathic Association today!

As health care becomes more complex on the state and national level, it's more important than ever that the Oklahoma Osteopathic Association continues to represent your interest and those of your patients to our state legislators and state leaders. That is, the OOA is the voice for all Oklahoma DOs, no matter what your specialty, no matter where you work or who you work for. We are the only organization in the state that advocates for DO physicians and their patients. As a member physician please know that your opinions, thoughts and concerns are important to the OOA. Your membership is what allows the OOA to continue to serve you and the osteopathic profession.

Not a Physician? You can still join the OOA as an Associate Member!

Associate membership may be granted to teaching, research, administrative, or executive employees of accredited osteopathic colleges or of osteopathic hospitals approved by the American Osteopathic Association, members' full-time employees, and to administrative employees of this Association or of affiliated organizations or of district societies.

If you are interested in learning more on how you can impact healthcare in Oklahoma, email jeff@okosteo.org.



#OOAScopes

Douglas C. Nolan, DO, Athena Chatzigiannidis, DO, Shawna Duncan, DO and OOA Executive Director Allison LeBoeuf present OSU-COM at the Cherokee Nation First Year Students with Stethoscopes



Teresa Hardesty, DO, Christopher C. Thurman, DO, Richard W. Schafer, DO and OOA Executive Director Allison LeBoeuf present OSU-COM Tulsa First Year Students with Stethoscopes

Stethoscopes for Students

In October, the OOA and OEFOM presented first year medical students at OSU-COM in Tahlequah and Tulsa with stethoscopes to use as they begin their osteopathic journey. The students were so grateful and appreciative for the 3M Littmann Cardiology IV stethoscopes in OOA blue. The groups enjoyed a relaxed evening with pizza, soft drinks and information on the OOA and OEFOM and how they can get involved in the coming years.

Patrick M. Cody, DO
Emergency Medicine
Norman, OK

Timothy Fernstrom, DO
Internal Medicine
Reston, VA

Clayton A. Garrett, DO
Family Medicine
Tishomingo, OK

Frances F. Haas, DO
Internal Medicine
Tulsa, OK

Donna Hand, DO
Family Medicine
Lindale, TX

Wendell Hand, DO
Family Medicine
Lindale, TX

Melanie Hutchinson, DO
Family Medicine
Enid, OK

Ama S. Isaac, DO
Family Medicine
Lawton, OK

Pamela A. Jarrett, DO
Pediatrics
Claremore, OK

Alyssa Penick, DO
Family Medicine
Oklahoma City, OK

Kenneth E. Phillips, DO
Emergency Medicine
Tulsa, OK

Johnny R. Rodriguez, DO
General Surgery
Talihina, OK

Colton J. Roth
Associate Member
Oklahoma City, OK

Andrew Ryals, DO
Family Medicine
Ft. Smith, AR

Said Sadeghi, DO
Pediatrics
Tulsa, OK

Calendar of Events

November 4, 2021

OOA Board of Trustees Meeting
Oklahoma City, OK

November 25-26, 2021

OOA Office Closed for Thanksgiving

December 2, 2021

OOA Bureaus & Board of Trustees Meetings
OEFOM Board of Trustees Meeting
Oklahoma City, OK

December 24, 2021

OOA Office Closed for Christmas

December 31, 2021

OOA Office Closed for New Year's

January 6, 2022

OOA Bureaus & Board of Trustees Meetings
Oklahoma City, OK

January 21 - 23, 2022

OOA's Annual Winter CME Seminar
Catoosa, OK

January 25, 2022

Bureau on CME Meeting
Held via Zoom

February 2, 2022

Bureau on Legislation Meeting
Oklahoma City, OK

February 3, 2022

OOA Bureaus & Board of Trustees Meetings
Oklahoma City, OK

OKLAHOMA OSTEOPATHIC ASSOCIATION
4848 N. Lincoln Blvd.
Oklahoma City, Oklahoma 73105-3335

Prsrtd Std
US Postage
Paid
Okla City OK
Permit #209

RICH & CARTMILL, INC.



Insurance & Bonds Since 1922



RELATIONSHIPS YOU CAN RELY ON

PROTECTING YOUR MEDICAL PRACTICE FOR 83 YEARS

The Oklahoma Osteopathic Association has endorsed
Rich & Cartmill, Inc. and Medical Protective since 1999

Please support your OOA and consider Rich & Cartmill, Inc.
for your Professional Liability Insurance needs.

For more information contact Scott Selman
at 918-809-1461 or sselman@rcins.com



2738 E 51st Street, Suite 400 | Tulsa, OK 74105-6228 | 918.743.8811 | www.rcins.com

TULSA

OWASSO

OKLAHOMA CITY

SPRINGFIELD, MO